

FOR LEASE | STUDIO OFFICE SPACE

28 INDUSTRIAL STREET

EAST YORK, TORONTO, ON



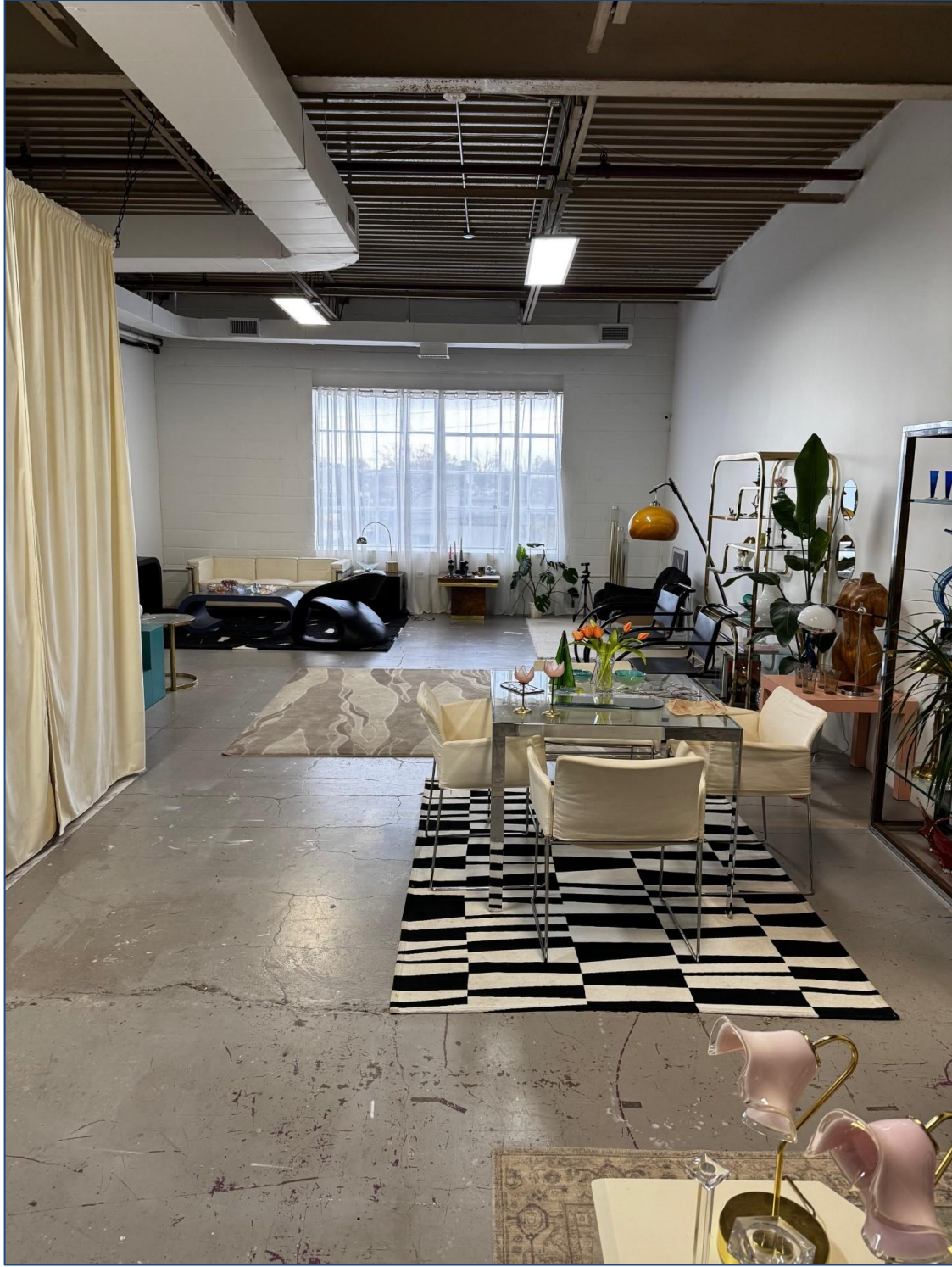


DETAILS

LOCATION	On Industrial Street, east of Laird Drive. Click here for map.	
BUILDING DETAILS	Unit 112	990 SF
	Unit 114	1480 SF
	Unit 121	750 SF
MONTHLY GROSS RENT	Unit 112	\$3060/Month
	Unit 114	\$4,581/Month
	Unit 121	\$2,000/Month
TERM	1-5 Years	
POSSESSION	Contact Agent	

PROPERTY OVERVIEW

- Bright, spacious, self-contained, air-conditioned office spaces
- Large, open work area, kitchenette, bathroom
- Large industrial style windows, providing Incredible amount of natural light
- Onsite parking available
- TTC accessibility - roughly 20 minutes to Eglinton or Donlands Station via TTC

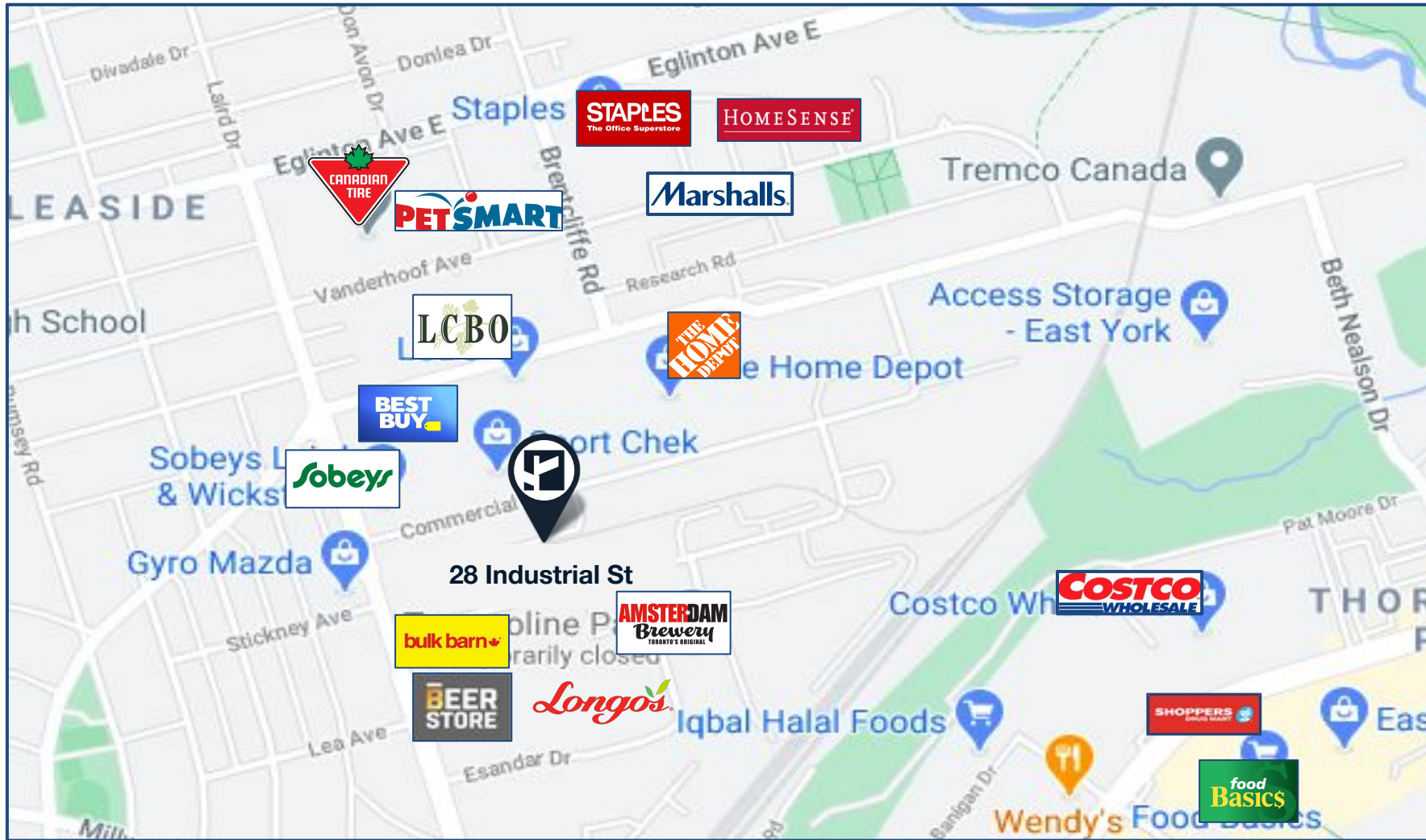


PHOTOS
28 INDUSTRIAL STREET



AREA MAP

28 INDUSTRIAL STREET



Excellent Transit

Transit is convenient for most trips.



Very Walkable

Most errands can be accomplished on foot.



CB METROPOLITAN

CONTACT:

TIM NOVAK*

Senior Vice President

416.703.6621 Ext. 246

Tim.novak@cbmetcom.com

370 KING STREET WEST, UNIT 802

TORONTO, ON | M5V 1J9

416.703.6621

WWW.CBMETCOM.COM

The information contained herein has been gathered from sources deemed reliable. However, CB Metropolitan Commercial Ltd., Brokerage, its agents, or employees make no representations or warranties on the accuracy of said information. Prospective tenants and their agents are advised to independently verify any information provided herein. CB Metropolitan Commercial Ltd., Brokerage *Sales Representative **Broker