

FOR LEASE | STUDIO OFFICE SPACE

# 28 INDUSTRIAL STREET

EAST YORK, TORONTO, ON





# DETAILS

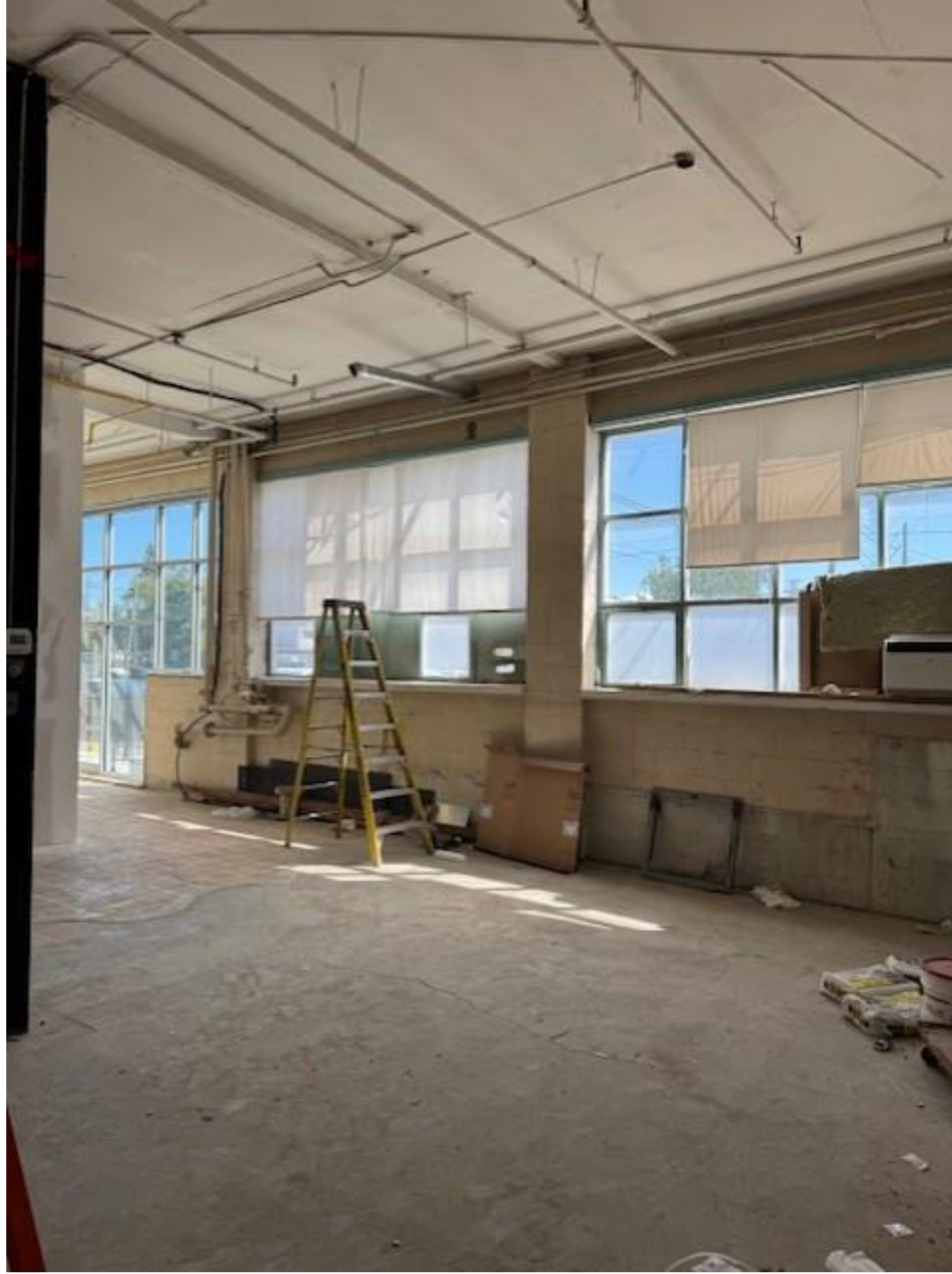
---

LOCATION	On Industrial Street, east of Laird Drive. <a href="#">Click here for map.</a>		
BUILDING DETAILS	Unit 110	1,200	SF
	Unit 112	990	SF
	Unit 114	1,480	SF (Direct Access via Door to Parking)
	Unit 118A	1,000	SF
MONTHLY GROSS RENT	Unit 110	\$3,465/Month	
	Unit 112	\$2,700/Month	
	Unit 114	\$2,800/Month (Includes Mezzanine)	
	Unit 118A	\$2,500/Month (Exterior Door)	
TERM	1-5 Years		
POSSESSION	Contact Agent		

# PROPERTY OVERVIEW

---

- Bright, spacious, self-contained, air-conditioned office spaces
- Large, open work area, kitchenette, bathroom
- Large industrial style windows, providing Incredible amount of natural light
- Onsite parking available
- TTC accessibility - roughly 20 minutes to Eglinton or Donlands Station via TTC



**UNIT 108**  
28 INDUSTRIAL STREET





**UNIT 112**  
28 INDUSTRIAL STREET







**UNIT 114**  
28 INDUSTRIAL STREET





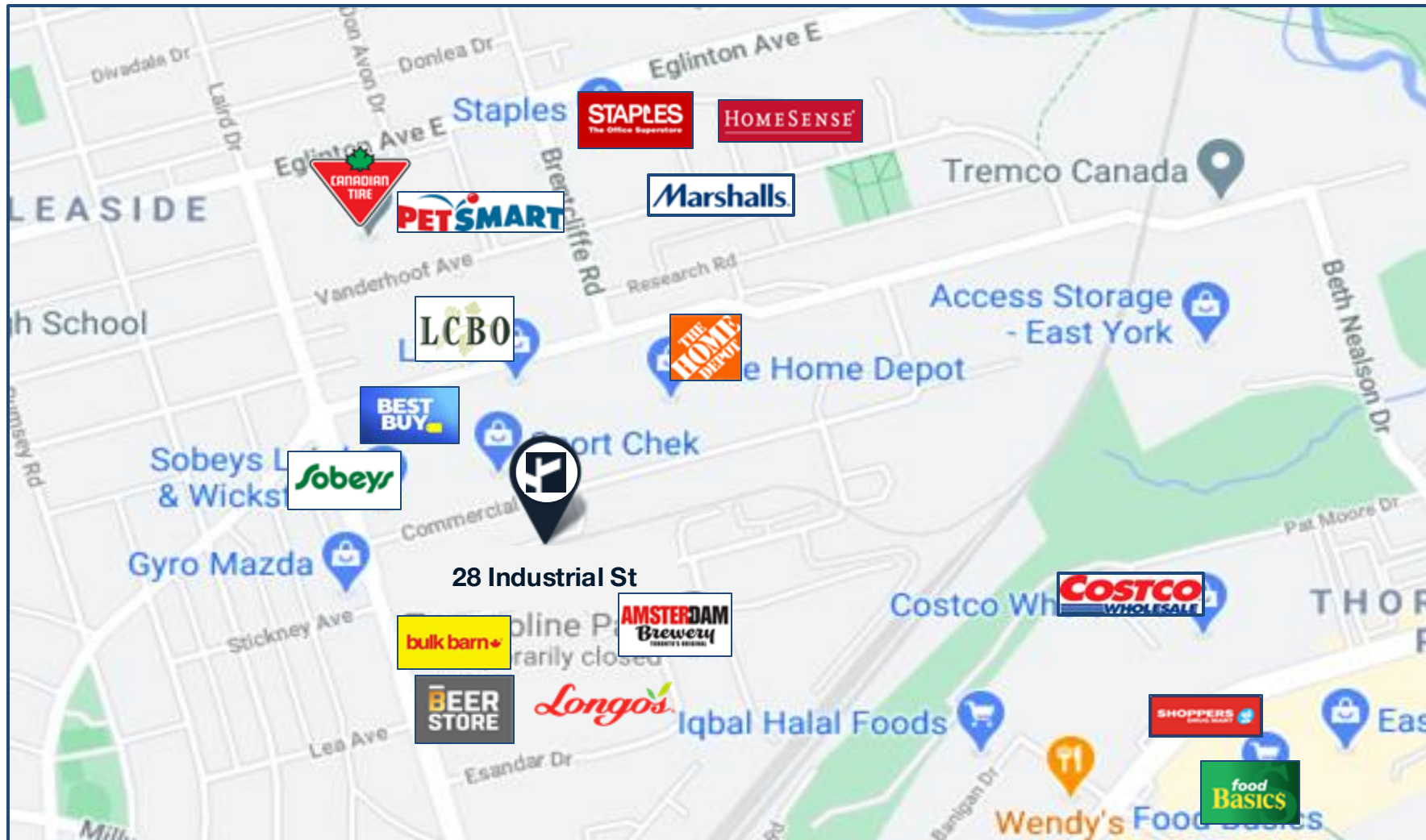
**UNIT 121**  
28 INDUSTRIAL STREET





## AREA MAP

28 INDUSTRIAL STREET



### Excellent Transit

Transit is convenient for most trips.



### Very Walkable

Most errands can be accomplished on foot.



# CB METROPOLITAN

## **CONTACT:**

### **TIM NOVAK\***

Senior Vice President

416.703.6621 Ext. 246

Tim.novak@cbmetcom.com

370 KING STREET WEST, UNIT 802

TORONTO, ON | M5V 1J9

416.703.6621

[WWW.CBMETCOM.COM](http://WWW.CBMETCOM.COM)

The information contained herein has been gathered from sources deemed reliable. However, CB Metropolitan Commercial Ltd., Brokerage, its agents, or employees make no representations or warranties on the accuracy of said information. Prospective tenants and their agents are advised to independently verify any information provided herein. CB Metropolitan Commercial Ltd., Brokerage \*Sales Representative \*\*Broker