

FOR LEASE | STUDIO OFFICE SPACE

28 INDUSTRIAL STREET

EAST YORK, TORONTO, ON



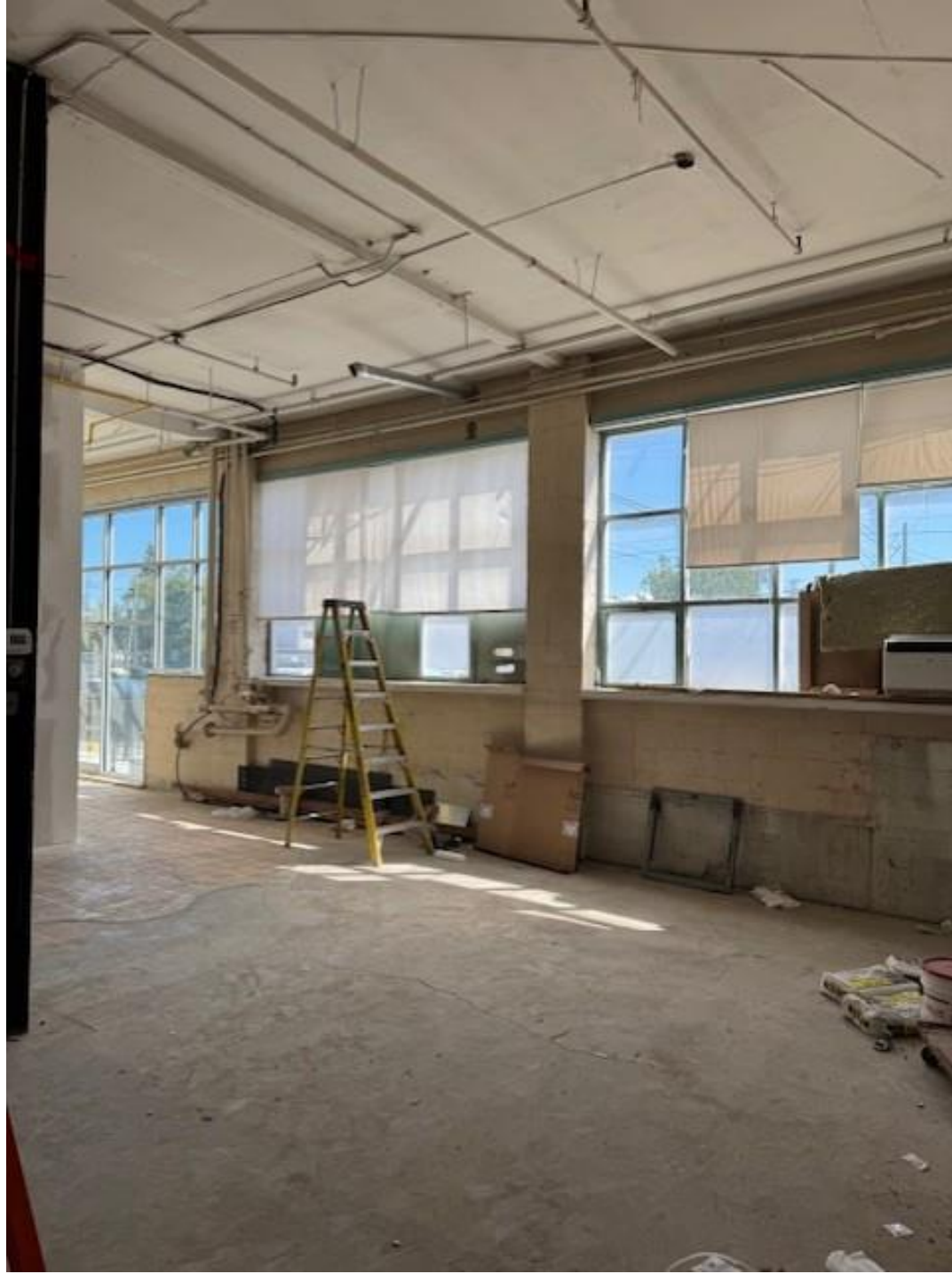


DETAILS

LOCATION	On Industrial Street, east of Laird Drive. Click here for map.		
BUILDING DETAILS	Unit 108	1,000	SF (Retail Storefront Access)
	Unit 110	1,200	SF
	Unit 112	990	SF
	Unit 113	700	SF
	Unit 114	1,480	SF (Direct Access via Door to Parking)
	Unit 118A	1,000	SF
	Unit 121	700	SF
	Unit 206	1,000	SF
MONTHLY GROSS RENT	Unit 108	\$2,999/Month	
	Unit 110	\$3,465/Month	
	Unit 112	\$2,999/Month	
	Unit 113	\$2,363/Month	
	Unit 114	\$3,999/Month (Includes Mezzanine)	
	Unit 118A	\$2,808/Month	
	Unit 121	\$1,900/Month	
	Unit 206	\$3,400/Month	
TERM	1-5 Years		
POSSESSION	Contact Agent		

PROPERTY OVERVIEW

- Bright, spacious, self-contained, air-conditioned office spaces
- Large, open work area, kitchenette, bathroom
- Large industrial style windows, providing Incredible amount of natural light
- Onsite parking available
- TTC accessibility - roughly 20 minutes to Eglinton or Donlands Station via TTC



UNIT 108
28 INDUSTRIAL STREET





UNIT 112
28 INDUSTRIAL STREET





UNIT 114
28 INDUSTRIAL STREET





UNIT 121
28 INDUSTRIAL STREET





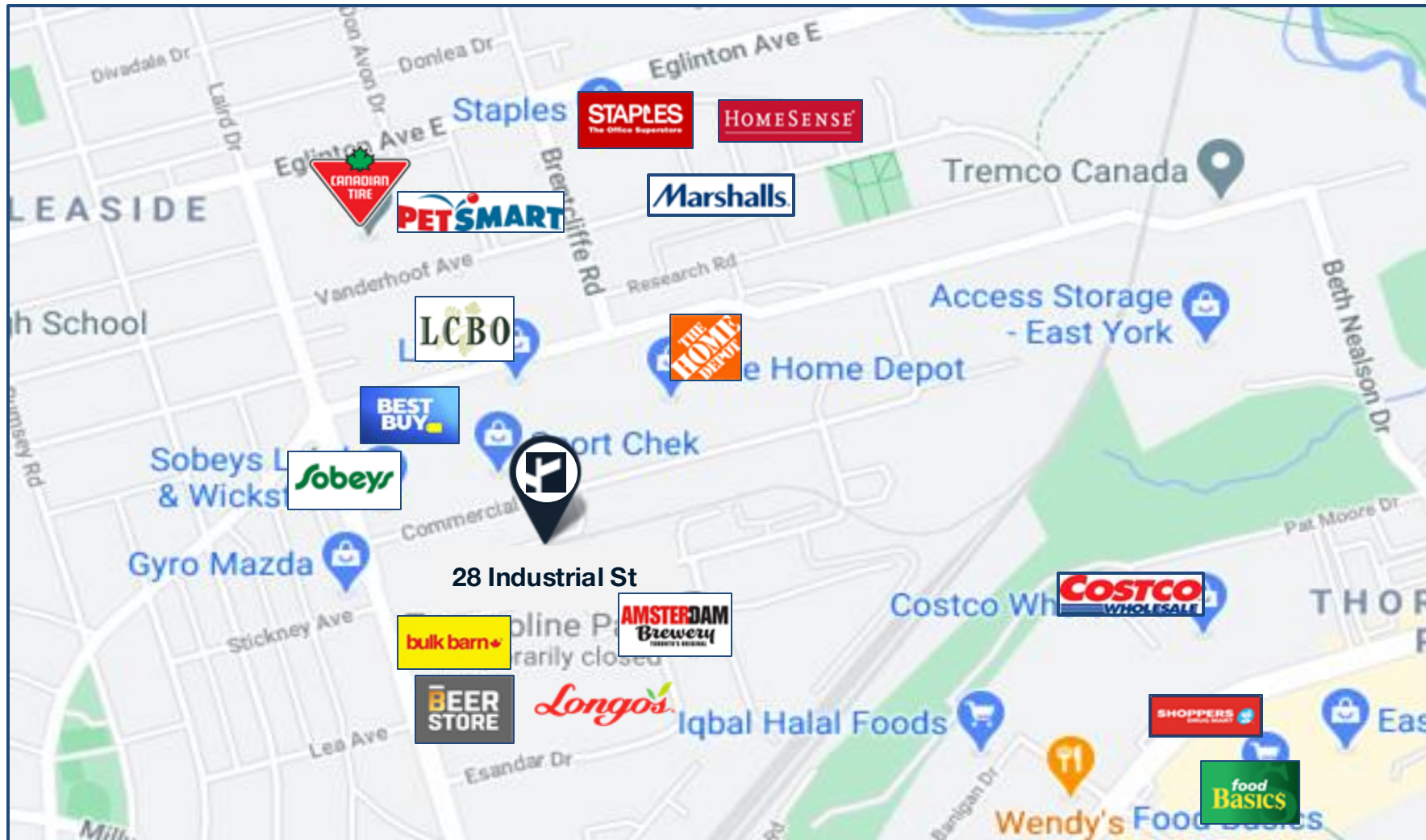
UNIT 206
28 INDUSTRIAL STREET





AREA MAP

28 INDUSTRIAL STREET



Excellent Transit

Transit is convenient for most trips.



Very Walkable

Most errands can be accomplished on foot.



CB METROPOLITAN

CONTACT:

TIM NOVAK*

Senior Vice President

416.703.6621 Ext. 246

Tim.novak@cbmetcom.com

370 KING STREET WEST, UNIT 802

TORONTO, ON | M5V 1J9

416.703.6621

WWW.CBMETCOM.COM

The information contained herein has been gathered from sources deemed reliable. However, CB Metropolitan Commercial Ltd., Brokerage, its agents, or employees make no representations or warranties on the accuracy of said information. Prospective tenants and their agents are advised to independently verify any information provided herein. CB Metropolitan Commercial Ltd.,

Brokerage *Sales Representative **Broker