

FOR LEASE

411 Parliament St

Office Space | ENTIRE SECOND FLOOR



## DETAILS

---

<b>LOCATION</b>	Located on the corner of Parliament St and Gerrard St. <a href="#">CLICK HERE</a>
<b>BUILDING DETAILS</b>	Entire Second Floor: 6,318 SF
<b>NET RENTAL RATE</b>	\$10.00 PSF
<b>ADDITIONAL RENT</b>	\$4.01 PSF
<b>TERM</b>	2-10 Years
<b>POSSESSION</b>	Immediate

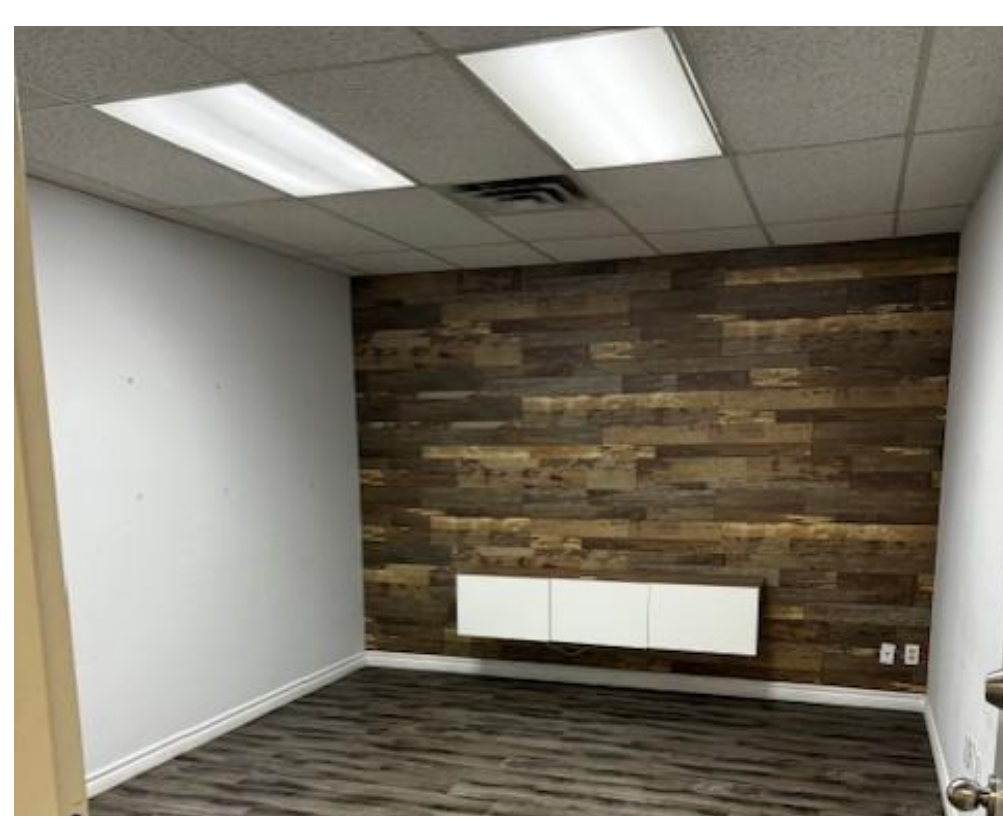
## PROPERTY SUMMARY

---

- Entire second floor (405-411 Parliament St) available with abundant private offices, training rooms and meeting spaces
- Property ideal for medical, school or office uses
- 3 onsite parking spaces
- Building signage available

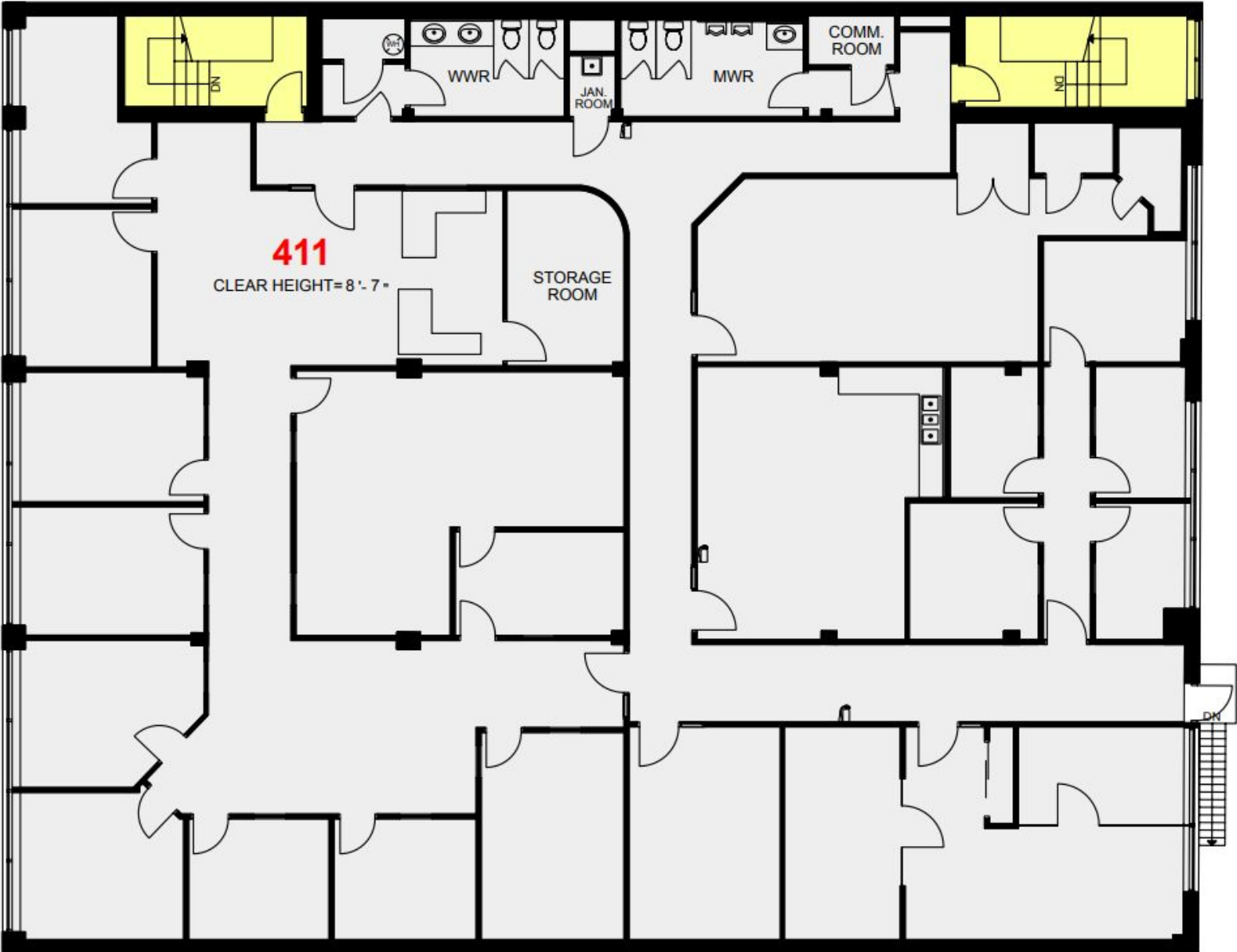








Floorplan  
Second Floor



# CONNECTIVITY

[CLICK  
HERE](#)



**BIKE SCORE OF 100**

→ Daily errands can be accomplished on a bike



**TRANSIT SCORE OF 92**

→ World-class public transportation



**WALK SCORE OF 99**

→ Daily errands do not require a car

# AREA MAP



## CONTACT

**TIM NOVAK\***

Senior Vice President  
416.703.6621 Ext. 246  
Tim.novak@cbmetcom.com



370 KING STREET WEST, UNIT 802  
TORONTO, ON | M5V 1J9  
416.703.6621  
[WWW.CBMETCOM.COM](http://WWW.CBMETCOM.COM)