

FOR LEASE

90 Cawthra Ave

Industrial/Warehouse



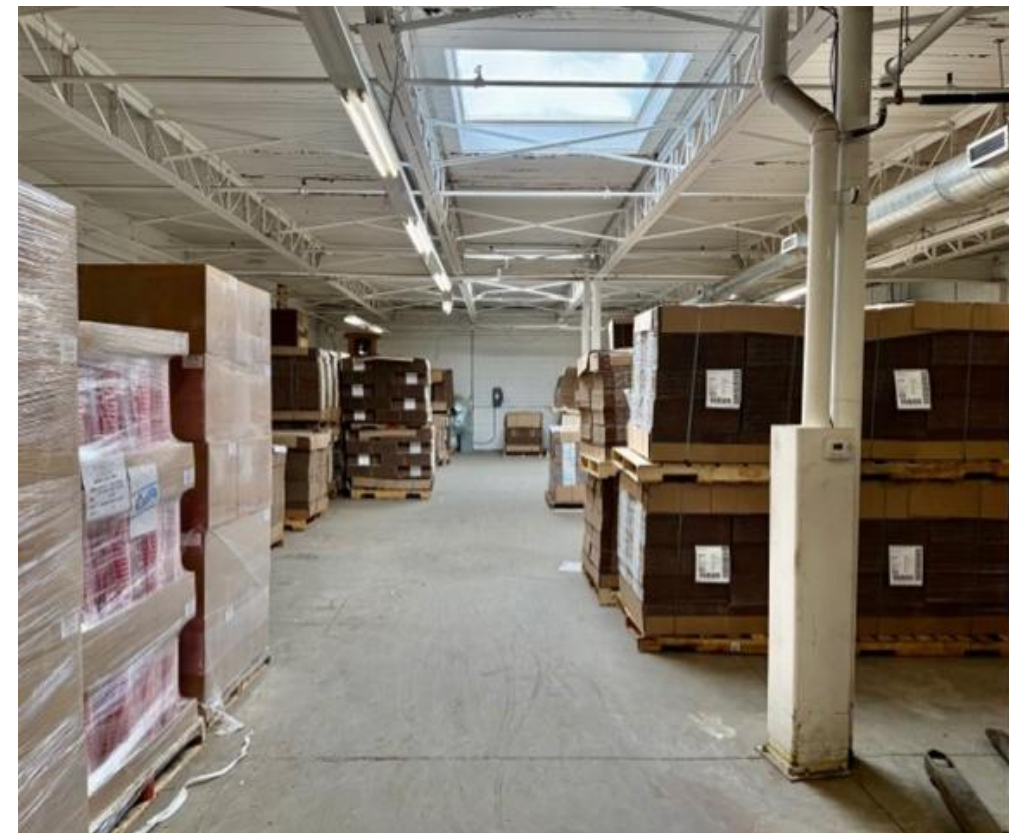
PROPERTY DETAILS

LOCATION	Starting at the corner of Hirons Street & Cawthra Avenue, east of Keele Street. CLICK FOR MAP
SIZE	Unit 102 (Warehouse) 4,577 SF
TERM	2-5 Years
POSSESSION	Immediate
ASKING RATE	\$29 Per Square Foot Semi-Gross

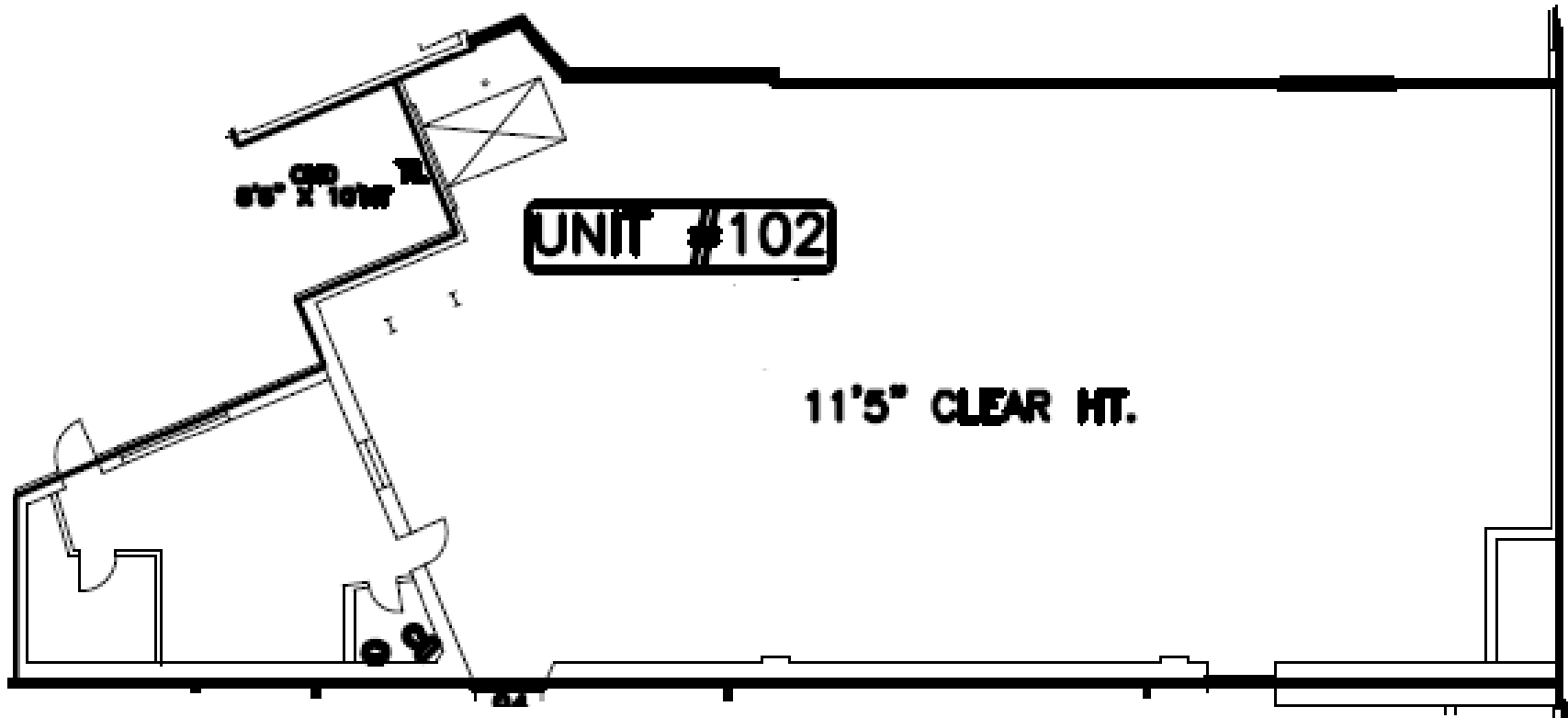
PROPERTY HIGHLIGHTS

- Warehouse space with truck level shipping door, 13 ft ceilings, 2 sky-lites and small office area/reception.
- The property is a 10-minute walk from Old Stockyards & Stock Yards Village, with its abundant restaurants/shops.
- 5-minute walk from bus stops at Keele st and St Clair Ave W, with service to St Clair W and Keele Subway Stations.

Unit 102 - Warehouse



Floorplan



CONNECTIVITY



BIKE SCORE OF **58**



TRANSIT SCORE OF **84**

→ Transit is convenient for most trips.

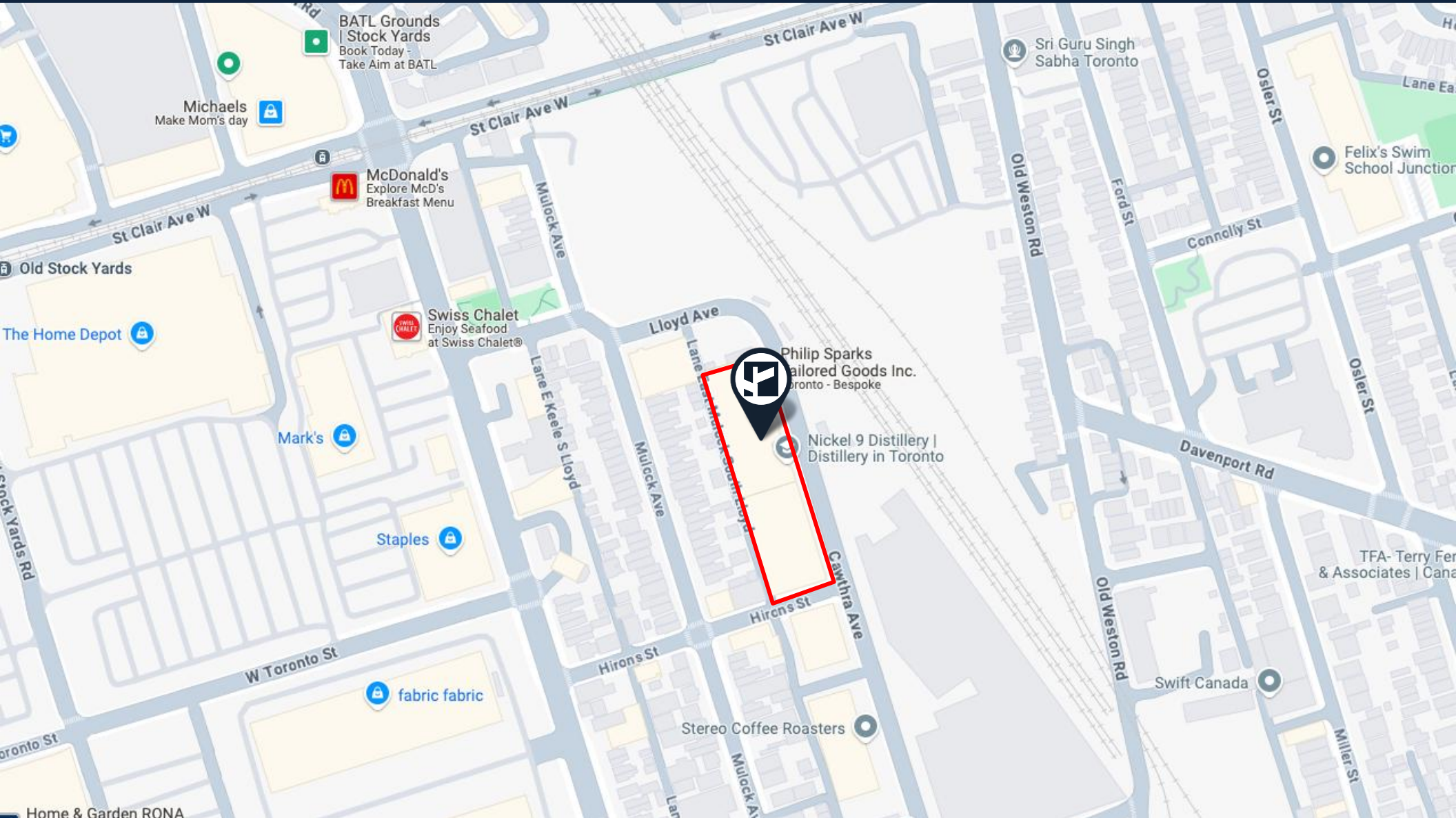


WALK SCORE OF **86**

→ Most errands can be accomplished on foot



AREA MAP



CONTACT

TIM NOVAK*

Senior Vice President

416.703.6621 Ext. 246

Tim.novak@cbmetcom.com



370 KING STREET WEST, UNIT 802

TORONTO, ON | M5V 1J9

416.703.6621

WWW.CBMETCOM.COM