

FOR LEASE

1485 DUPONT STREET

Flex Space | Suites 101, 106, 116 & 312



CB
METROPOLITAN

DETAILS

LOCATION Located on Dupont Street, one block east of Symington Avenue. [CLICK HERE](#)

| BUILDING DETAILS | Suite | Area |
|------------------|-------|----------------------|
| | 101 | 1,603 SF |
| | 106 | 7,445 SF |
| | 116 | 1,551 SF or 1,998 SF |

| RENTAL RATE | Suite | Rate |
|-------------|----------------|-------------------|
| | 101 | \$35 Per SF Gross |
| | 106, 116 & 312 | \$32 Per SF Gross |

TERM 3-5 Years

POSSESSION Immediate

PROPERTY OVERVIEW

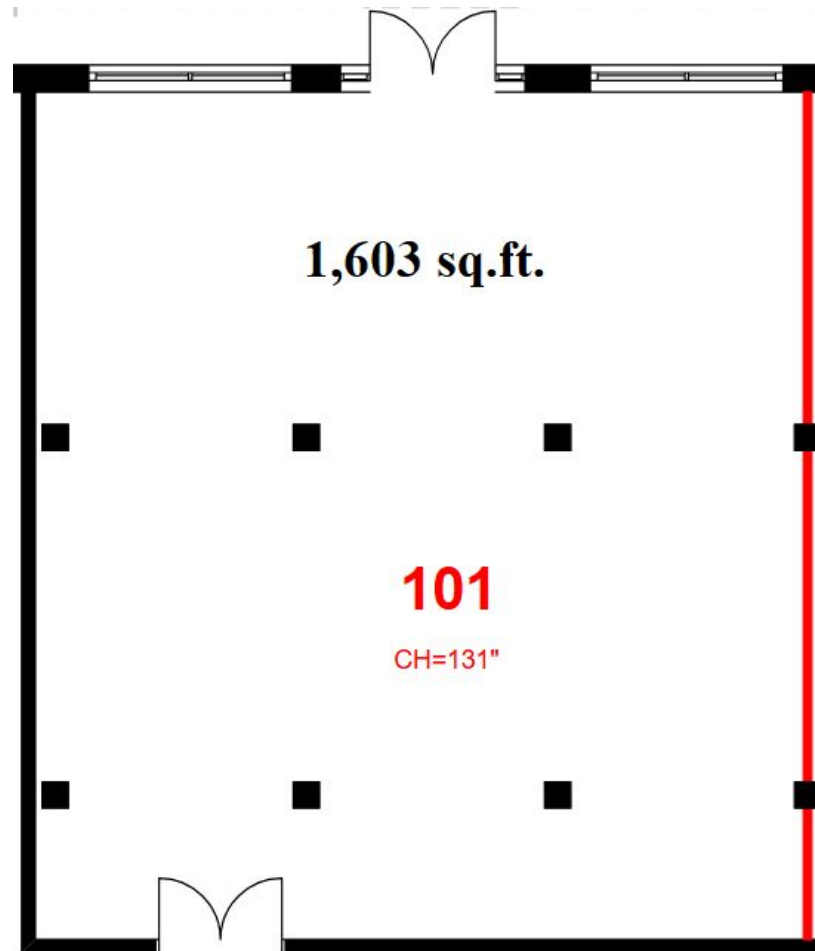
Located in Toronto’s Dovercourt-Junction corridor, 1485 Dupont St has a wide range of Studio/Office Spaces available for lease, providing a creative hub in the Junction Triangle.

FEATURES

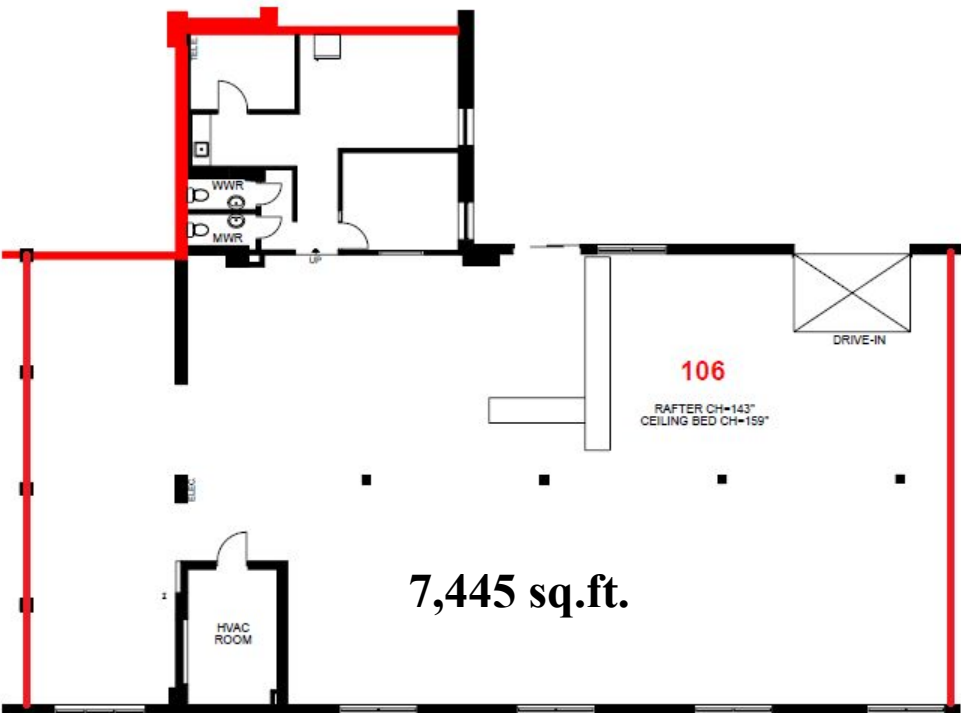
- 13.5 foot ceilings
- Abundant natural light
- Polished or epoxy concrete floors
- Freight elevator

With a café on site and many cafés, restaurants and breweries in the surrounding area, 1485 Dupont Street is part of a closely connected community of businesses and residents.

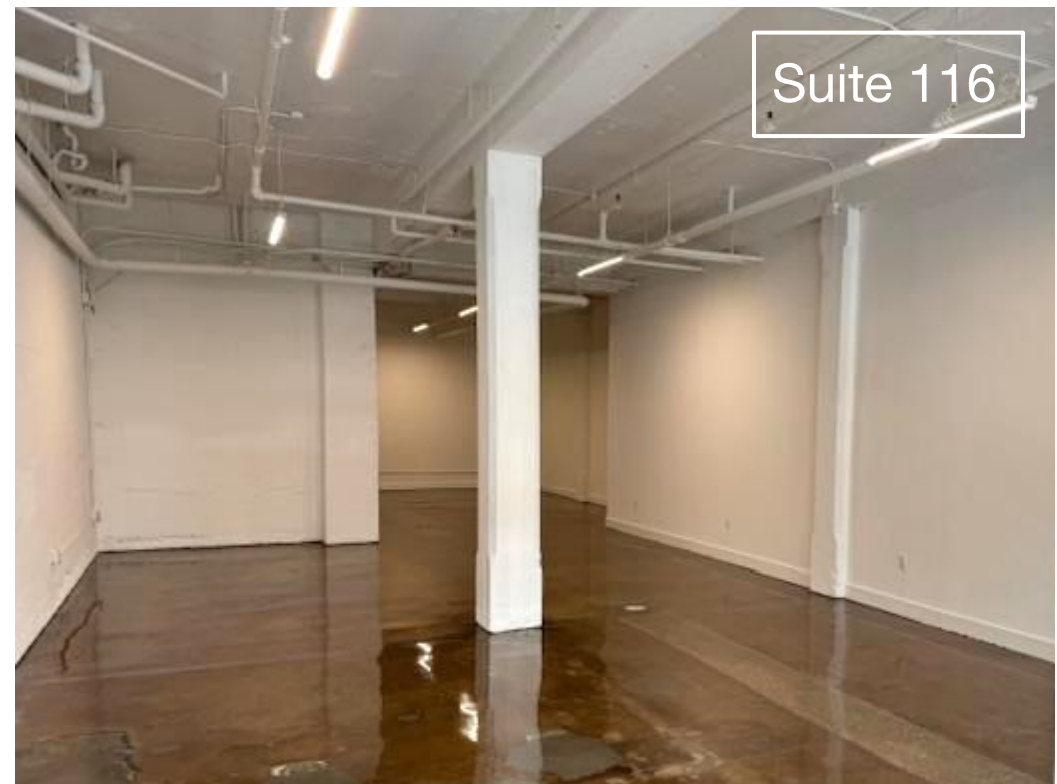
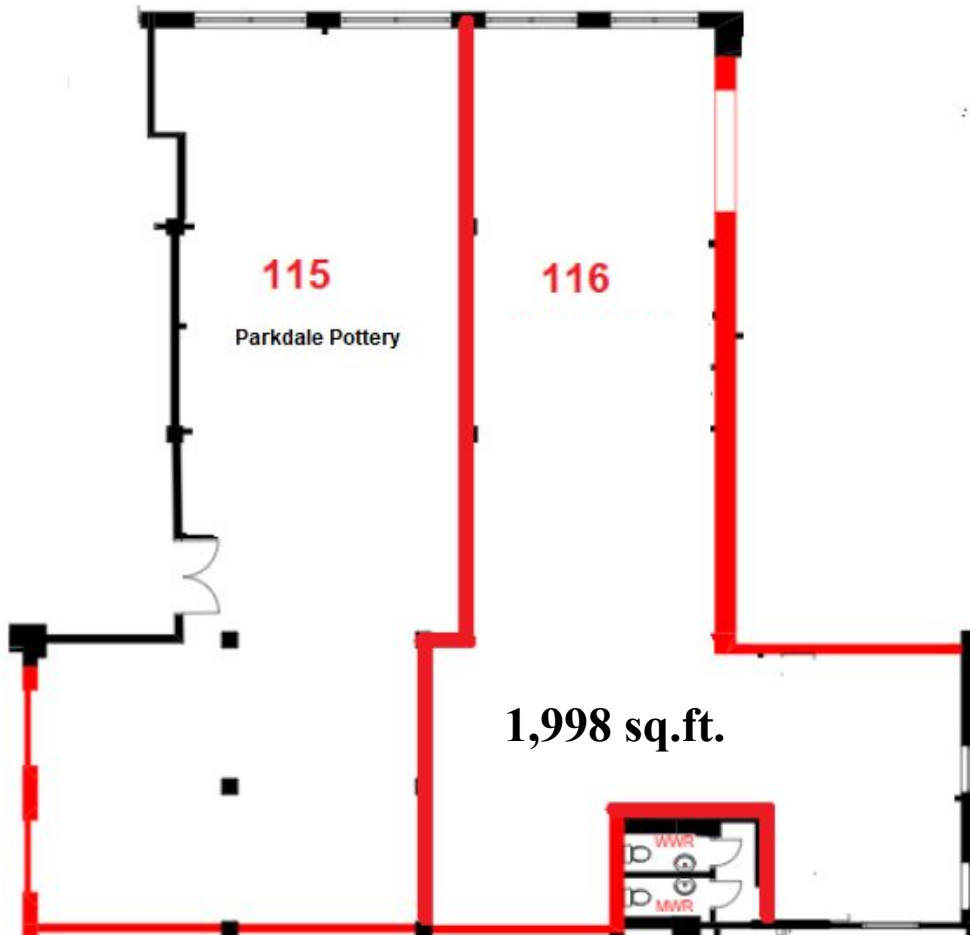




Suite 106



7,445 sq.ft.



CONNECTIVITY

[CLICK
HERE](#)



BIKE SCORE OF **88**

→ Biking is convenient for most trips



TRANSIT SCORE OF **75**

→ Transit is convenient for most trips



WALK SCORE OF **93**

→ Daily errands do not require a car

AREA MAP

Restaurants

- 1 Mattachioni
- 2 Lucia | Toronto | Italian Dining
- 3 Dotty's
- 4 Colombian Street Food
- 5 Boo Radley's
- 6 Piri Piri Grill
- 7 Gus Tacos
- 8 Taqueria Vegana
- 9 Caldense Bakery
- 10 The Wedge
- 11 Rancho Relaxo To Go
- 12 Donna's
- 13 Halo Brewery
- 14 Balam Toronto
- 15 Propeller Coffee
- 16 Sugo
- 17 Burdock Brewery
- 18 gram's pizza

Banks

- 1 CIBC Branch with ATM
- 2 RBC Royal Bank
- 3 TD Canada Trust ATM
- 4 BMO Bank of Montreal

Grocery

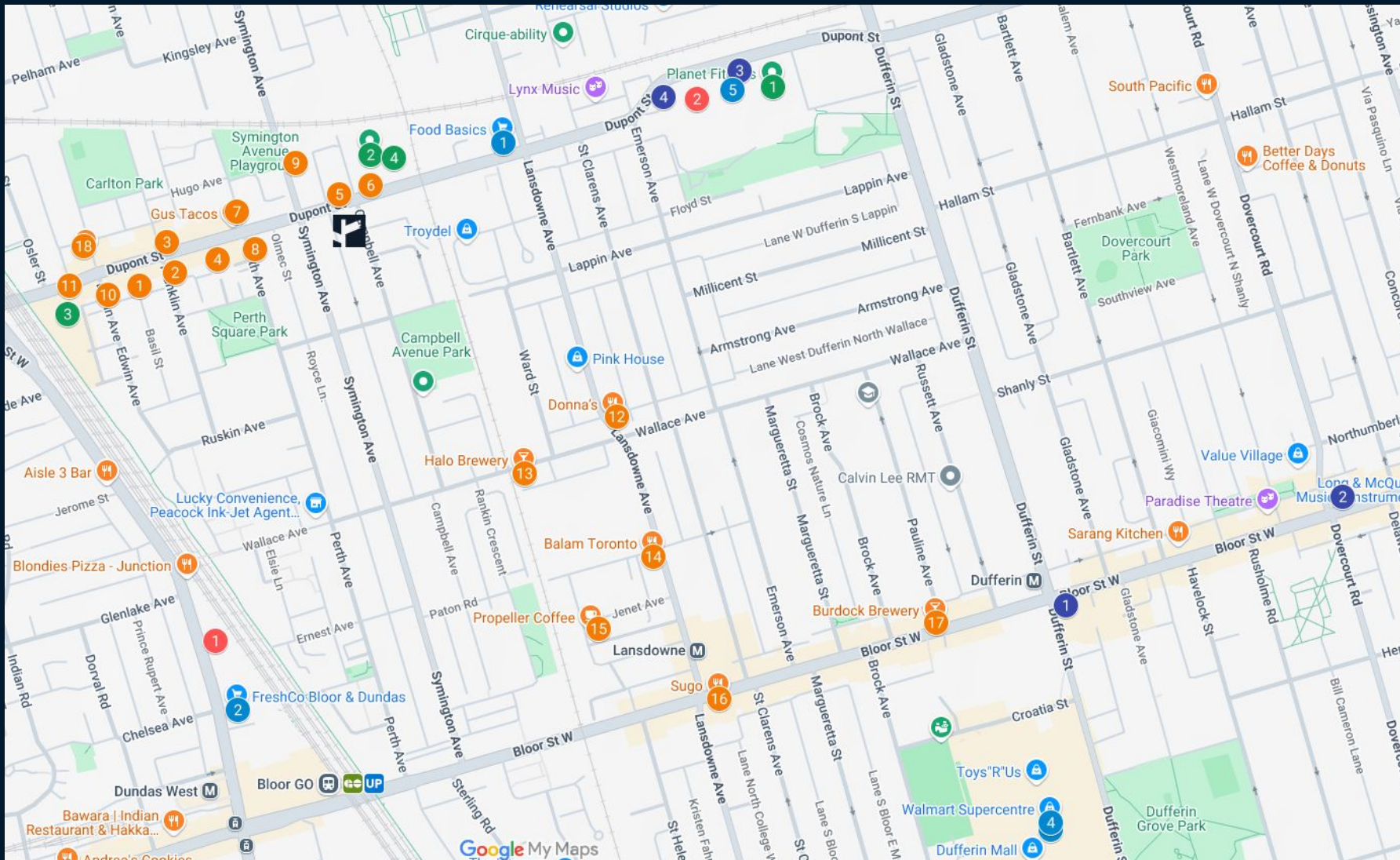
- 1 Food Basics
- 2 FreshCo Bloor & Dundas
- 3 NOFRILLS
- 4 Walmart Supercentre
- 5 FreshCo Dufferin & Dupont

Pharmacy

- 1 Shoppers Drug Mart
- 2 Rexall

Wellness

- 1 Planet Fitness
- 2 Boulderz Climbing
- 3 F45 Training The Junction
- 4 Queens Fitness Studio



CONTACT

TIM NOVAK*

Senior Vice President
416.703.6621 Ext. 246
Tim.novak@cbmetcom.com



370 KING STREET WEST, UNIT 802
TORONTO, ON | M5V 1J9
416.703.6621
WWW.CBMETCOM.COM