



Summerhill Office Leasing
Opportunity

1133 Yonge

Toronto, ON

Sun Quach*
Managing Director

Ivanna Sankov*
Associate

647 873 3585
squach@cbmetcom.com

647 873 6735
isankov@cbmetcom.com

*Sales Representative



Opportunity

CB Metropolitan is pleased to present an office leasing opportunity at 1133 Yonge Street in the heart of the affluent Summerhill neighbourhood. Situated on the first floor of this mixed-use building with excellent frontage on Yonge St, we are excited to welcome your business to this busy node.

Availabilities	Suite 101 - Office Space
Asking Rent	\$25.00 per sf
TMI	±\$20.00 per sf
Gross Floor Area	1,742 sq. ft
Possession Date	Immediate



1133 Yonge St

Property Highlight

01

Excellent Yonge St Frontage

Situated on Yonge St in Summerhill, this office offers a prestigious business address with upscale amenities and excellent transit access

02

Customizable Office Space

This versatile unit offers plenty of windows, flooding the space with natural light to create a bright and inviting environment. It can be customized to suit a range of business needs, with the landlord open to completing a build-out for a seamless turnkey experience.

03

Prime Accessibility & Transit Connectivity

Conveniently located across from Summerhill Subway Station, providing direct access to TTC Line 1. On-site parking is also available for added convenience.

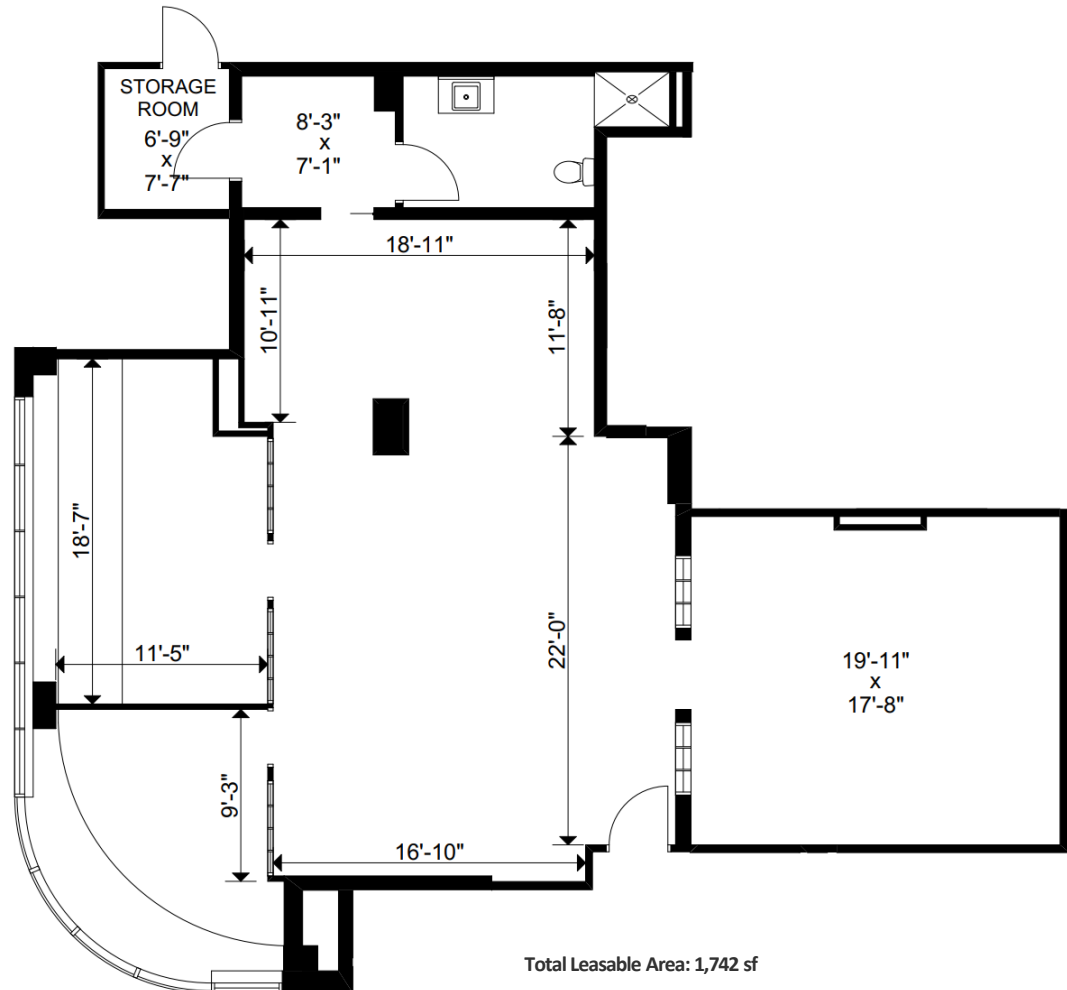
04

Vibrant Local Amenities

The area offers a variety of parks and amenities, including the LCBO, boutique meat and dessert shops, grocery stores, and a growing selection of new restaurants.

Floor Plans

Office - Suite 101

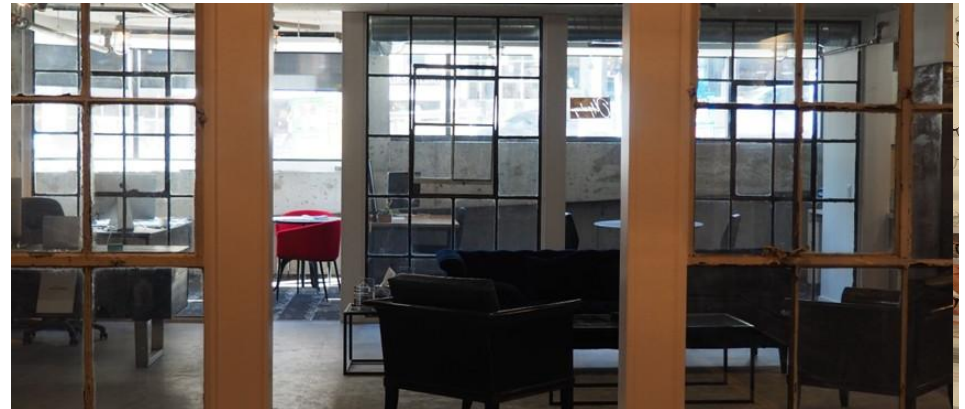
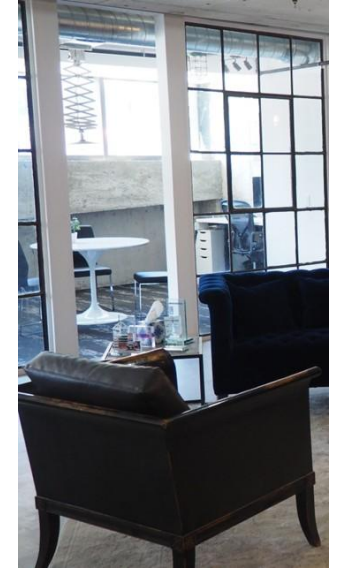




Area Overview

Summerhill, Toronto

Summerhill is a charming and upscale neighborhood in central Toronto, known for its historic homes, lush green spaces, and boutique-lined streets. Despite its residential appeal, Yonge Street in Summerhill experiences steady foot traffic due to its vibrant retail scene and transit access. The area's affluent residents have strong purchasing power, supporting a thriving local economy with high-end shops, fine dining, and specialty services. Its blend of historic charm, urban convenience, and community atmosphere makes Summerhill one of Toronto's most sought-after neighborhoods.



Population
2km radius

150,917

Household Income
5km households

\$177,005

Children
0-19 years

15%

Adult
20-54 years

60%

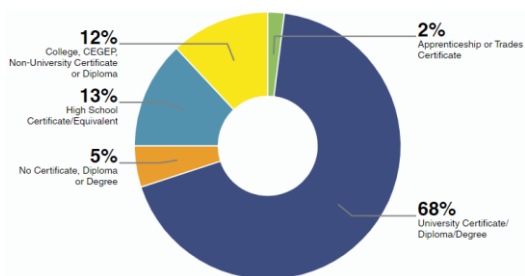
Pre-Retirement
55-64 years

11%

Seniors
65+ years

14%

Area Education Status



Retail

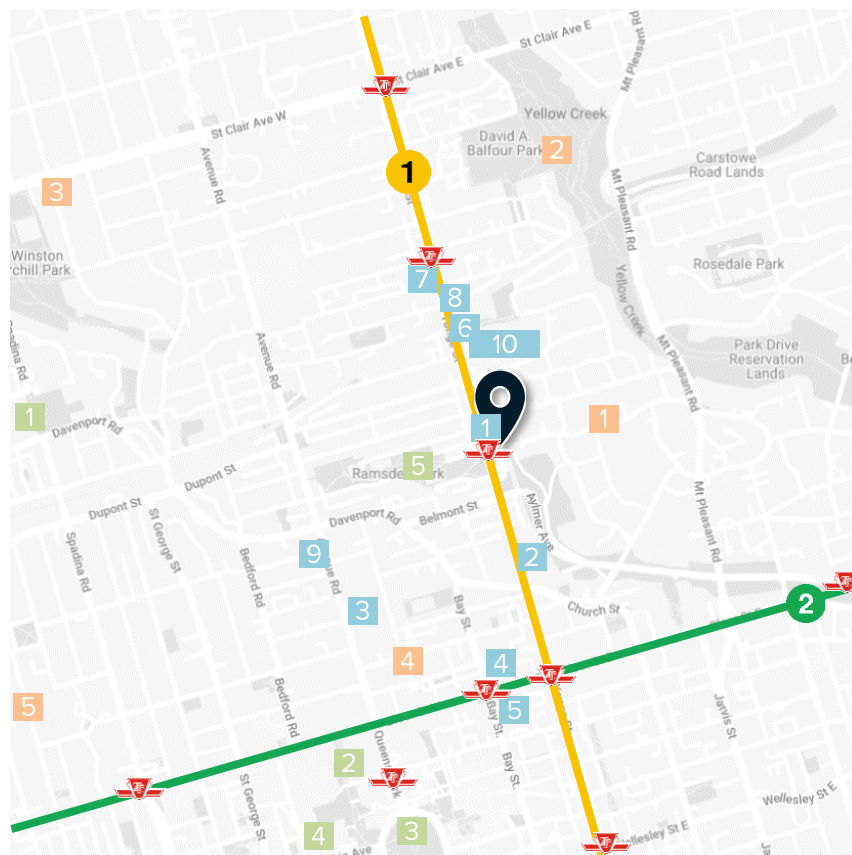
- 1 Shoppers Drug Mart
- 2 Canadian Tire
- 3 Yorkville Village
- 4 Holt Renfrew Centre
- 5 Manulife Centre
- 6 Teroni
- 7 Boxcar Social
- 8 LCBO
- 9 Sotro Sotro
- 10 Harvest Wagon

Neighborhoods

- 1 Rosedale
- 2 Summerhill
- 3 Casa Loma
- 4 Yorkville
- 5 The Annex

Points of Interest

- 1 Casa Loma
- 2 Royal Ontario Museum
- 3 Queens Park
- 4 University of Toronto
- 5 Ramsden Park





Contact for More Information

Sun Quach*
Managing Director

O: 416 703 6621 ext. 228
C: 647 873 3585
E: squach@cbmetcom.com

Ivanna Sanokov*
Associate

O: 416 703 6621
C: 647 873 6735
E: isankov@cbmetcom.com

* Sales Representative

**CB
METROPOLITAN**

370 King Street W, Suite 802
Toronto, ON | M5V 1J9
416 703 6621

Visit our Website

CBMETCOM.COM