

2600

John St. Markham

For Lease



Sun Quach*
Managing Director

6478733585
squach@cbmetcom.com

Minh Truong*
Associate

6478738461
mtruong@cbmetcom.com



*Sales Representative

220 - 2600 John Street

Overview

CB Metropolitan is pleased to present a prime office opportunity at 2600 John Street, ideally located in Markham. This versatile unit is well-suited for a range of professional services, medial offices, education uses. With excellent exposure, ample parking and convenient access to Highways 404 and 407, the property offers a strategic location for businesses looking to establish in a high-demand commercial node.

Address: 2600 John Street, Markham ON

GFA: 1,252 Sq Ft

Gross Rent: \$28.00 Sq Ft Gross

Term: 12 months – 36 months

Possession: Immediate

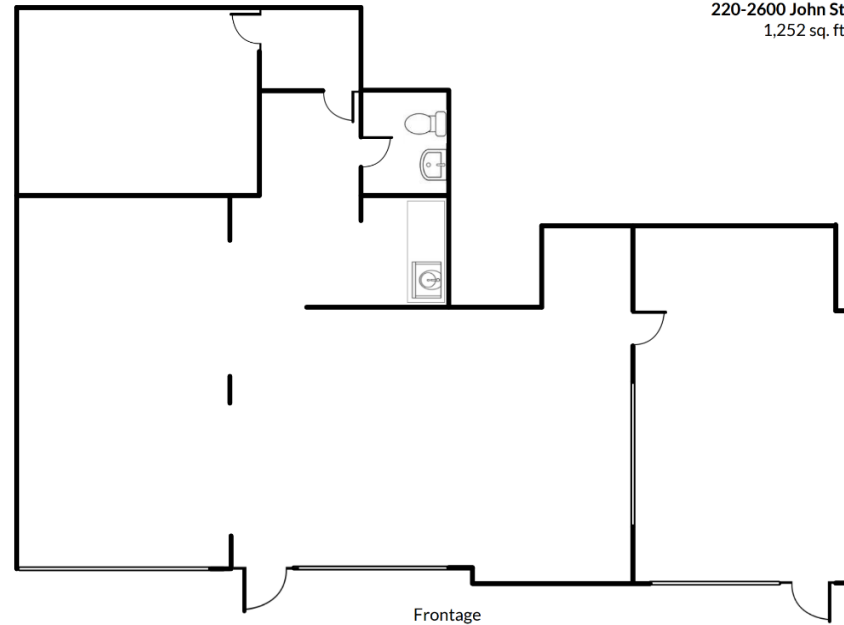
Major Intersection: Highway 404 & John Street

Zoning: EMP-GE

Additional Notes: No access to loading bay- professional office related clean uses only.



Floor Plan



Ideal Uses

Zoning: Employment- General Employment (EMP-GE)

Permitted Uses

- Business Office
- Professional Offices
- Dance Studio
- Film studio
- Retail store (up to 15% GFA)
- Service and repair establishment
- **Other Clean Professional Uses**

Restricted Uses By Condo Board:

- Restaurant
- Massage Parlour
- Tattooing Establishment

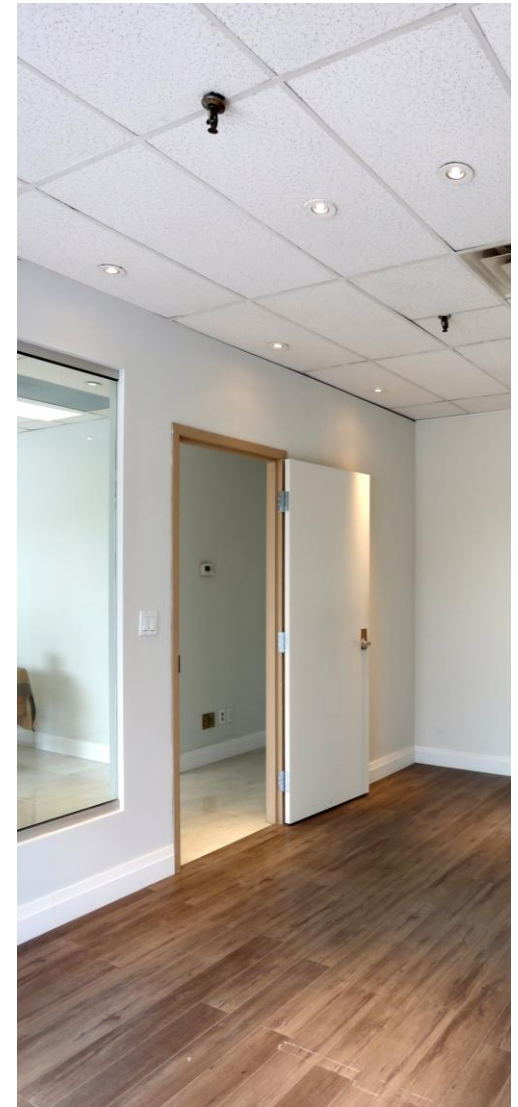
Restricted Uses Continued:

- Sale of Fireworks & Firecrackers
- Auction, Flea Market, Pawnshop
- Adult Entertainment Facilities
- Bowling Alley
- Nigh Club
- Betting Offices
- Heavy Manufacturing
- Arcade or Place of Amusement
- Place of Worship
- Correctional Home
- Dry Cleaning
- Funeral Home
- Banquet Hall



FOR LEASE

220-2600 John St, Markham



FOR LEASE
220-2600 John St, Markham

Contact for More Information

Sun Quach*
Managing Director

6478733585
squach@cbmetcom.com

Minh Truong*
Associate

6478738461
mtruong@cbmetcom.com

*Sales Representative

CB Metropolitan Commercial Ltd., Brokerage

370 King Street W, Suite 802
Toronto, ON | M5V 1J9
416 703 6621

Visit our Website
CBMETCOM.COM