

FOR SALE | INDUSTRIAL CONDO
5359 TIMBERLEA BLVD | UNIT 32
MISSISSAUGA | ON

 CB
METROPOLITAN

Tomken Rd

Pantera Dr

Matheson Blvd E

Timberlea Blvd



THE OFFERING

This purpose-built industrial condominium was designed to accommodate a range of light industrial and office users, offering a high-quality environment within a well-managed complex in the Timberlea Business Park. The unit features a professionally designed interior with upgraded office improvements, including full HVAC, enhanced electrical infrastructure, solid 9' interior doors, four private offices, four washrooms, and four skylights that provide abundant natural light throughout the workspace. A steel-structure mezzanine offers additional workstation space. All improvements were completed under full municipal permits, with architectural drawings and approvals available for review.

The property is strategically located near the intersection of Hurontario Street and Highway 401, with convenient access to Highways 403, 410, and 407, providing exceptional connectivity throughout the Greater Toronto Area and proximity to Pearson International Airport. The surrounding area is characterized by a strong mix of industrial, flex office, and showroom uses, supported by nearby retail and service amenities along Britannia Road East and Matheson Boulevard East.

The property is designated under the City of Mississauga Official Plan as Employment Area, permitting a wide range of industrial, office, and ancillary commercial uses.

Vendor financing is available for qualified buyers.



PROPERTY DETAILS

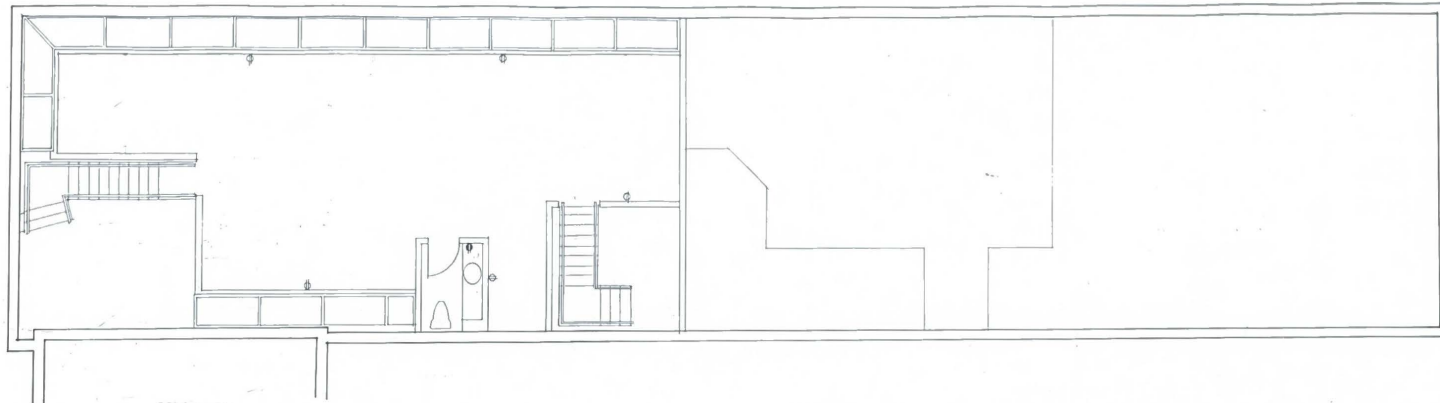


Official Plan	Business Employment (BE)
Zoning	Employment (E2-19)
Ward	5
Fibre	Available
Heating Systems	Forced air open
Asking Price	\$1,199,000

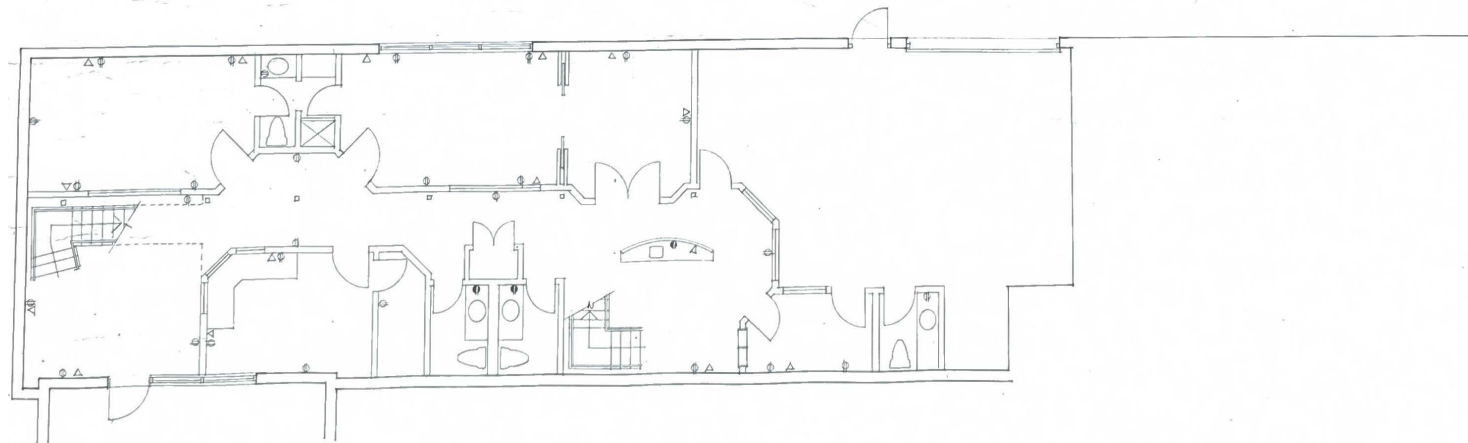
Location	One block south of Matheson Blvd on Timberlea Blvd.
Building Details	Unit 32 – 2,950 SF
Clear Height	Up to 16' 5"
Power	100 AMP, 600 VLT
Drive-in Doors	1
Parking	4
Washrooms	4
Occupancy	Owner occupied



FLOOR PLAN



MEZZANINE LEVEL



GROUND FLOOR

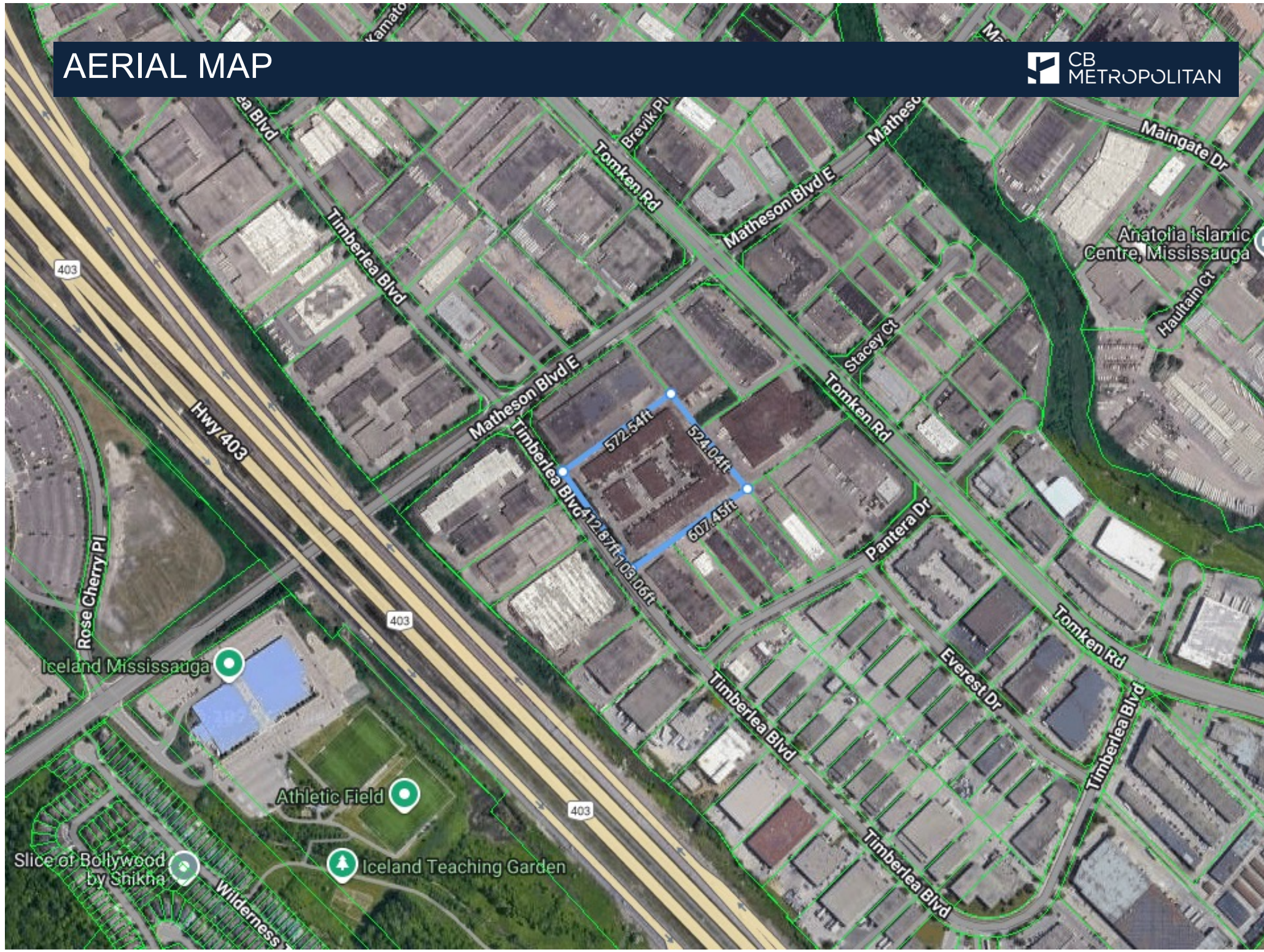
Photos:



Photos | Unit 2:



AERIAL MAP



Offering Process

CB Metropolitan Commercial Ltd, (the “Listing Brokerage”) has been exclusively retained to seek proposals to acquire the Property.

Kindly submit all offers to the contacts listed below.

Contacts

Ming Zee

Broker of Record

O: 416.703.6621 Ext. 222

C: 416.523.1368

E: ming.zee@cbmetcom.com

Nick Nankissoor

Sales Representative

O: 416.703.6621 Ext. 241

C: 647.406.6064

E: nick@cbmetcom.com

370 KING STREET WEST, UNIT 802

TORONTO, ON | M5V 1J9

416.703.6621

CBMETCOM.COM

DISCLAIMER: The information contained herein has been gathered from sources deemed reliable. However, CB Metropolitan Commercial Ltd., Brokerage, its agents, employees, independent contractors, and all affiliates of the Corporation make no representations or warranties on the accuracy of said information, images, assumptions or projections obtained from its sources. Prospective purchasers and their advisors are advised to independently verify any information provided herein by CB Metropolitan Commercial Ltd., Brokerage. Information herein has not been verified by CB Metropolitan Commercial Ltd. and may change and may be withdrawn from the market at anytime without notice to the recipient.