

FOR LEASE

531-533 YONGE STREET

Studio Loft For Lease



DETAILS

LOCATION Located on Yonge Street, South of Wellesley Street W.
[CLICK HERE](#)

BUILDING DETAILS	<u>Suite</u>	<u>Area</u>
	Unit 7	400 SF
	Unit 8A	300 SF
	Unit 8	450 SF

RENTAL RATE	<u>Suite</u>	<u>Rate</u>
	Unit 7	\$2,000/month + Utilities
	Unit 8A	\$1,650/month + Utilities
	Unit	\$2,000/month + Utilities

TERM 3-5 Years

POSSESSION IMMEDIATE

PROPERTY OVERVIEW

- Urban loft studio in the heart of downtown
- Minute to Wellesley Station-Yonge Street Line 1
- Abundant area amenities
- Live Work available

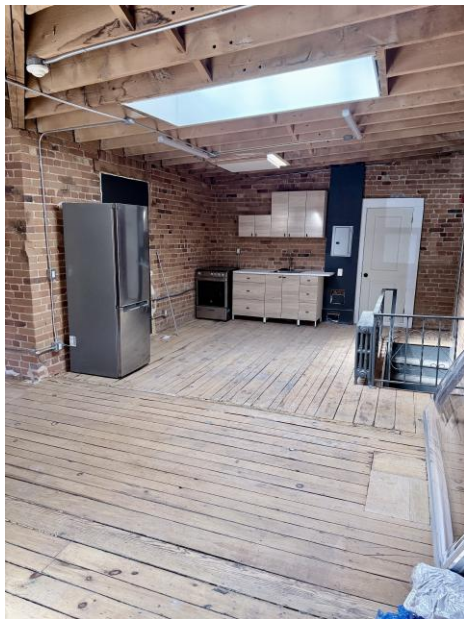
Located in the vibrant Church-Yonge Corridor, 531-533 Yonge Street sits in a bustling downtown neighbourhood characterized by a mix of historic charm, high-rise residential growth, and immense density. Residents enjoy unparalleled access to transit, dining, shopping, and proximity to the University of Toronto



UNIT 7



UNIT 8A



UNIT 8

CONNECTIVITY



BIKE SCORE OF 96
→ Bikers paradise

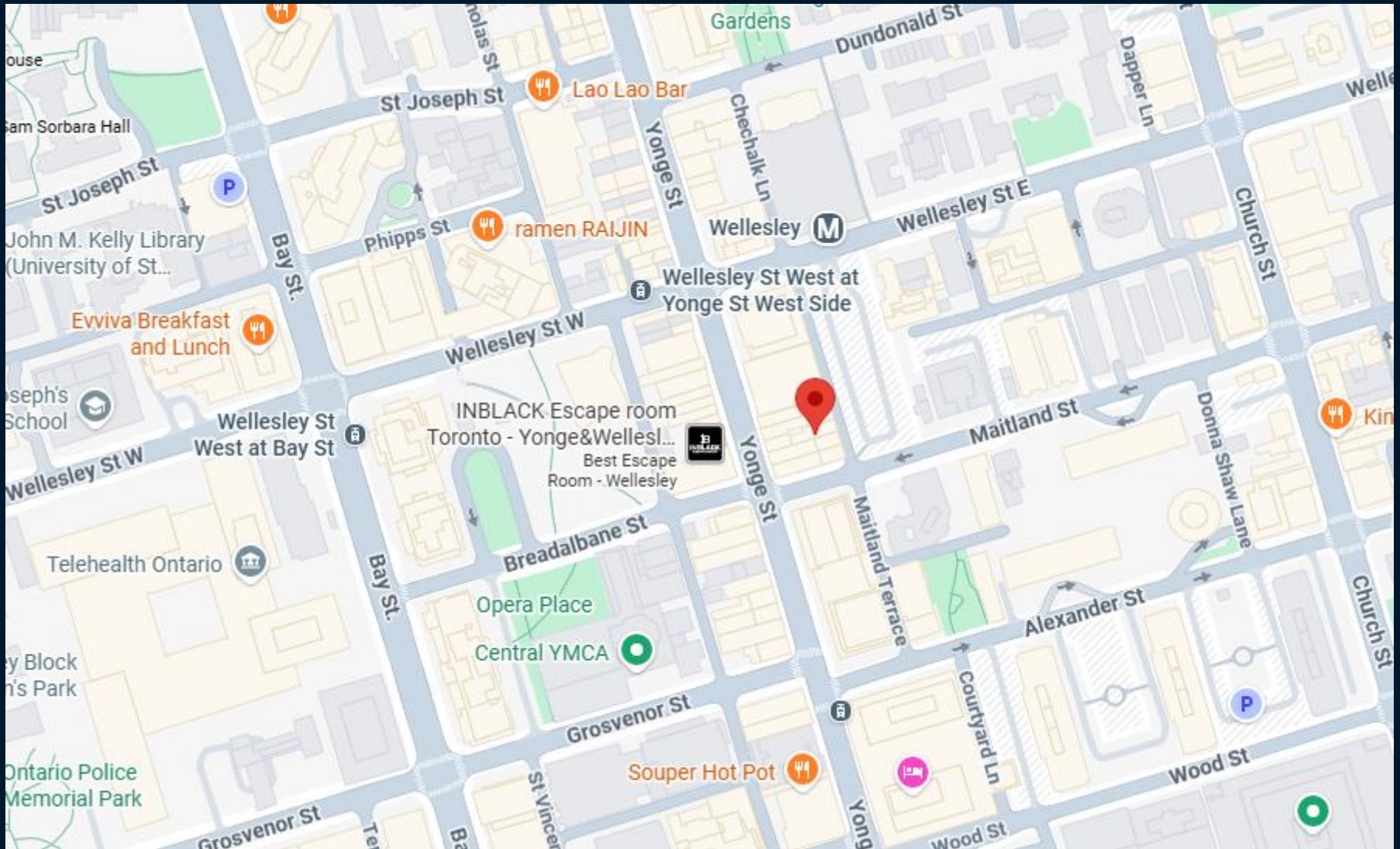


TRANSIT SCORE OF 96
→ Riders paradise



WALK SCORE OF 99
→ Walkers paradise

AREA MAP



CONTACT

TIM NOVAK*

Senior Vice President

416.703.6621 Ext. 246

Tim.novak@cbmetcom.com



370 KING STREET WEST, UNIT 802

TORONTO, ON | M5V 1J9

416.703.6621

WWW.CBMETCOM.COM